

Governor Mifflin Assessment News

March 9, 2009
Volume 1, Issue 1

Andréa E. Coleman-Hill
Director of Data Analysis, Assessments, and Research



PSSA News and Reminders

In the next week, we will fully engage in the 2009 PSSA Assessment Season.

The purpose of the Pennsylvania System of School Assessment (PSSA) is to obtain an accurate portrait of student, school, district, and state proficiency on the Pennsylvania Academic State Standards. If you are unfamiliar with the PSSA's, they are a series of tests mandated by the state to be taken by all students. The results are used to evaluate the effectiveness of our school's curriculum.

In preparation for the PSSA assessment:

- Please be sure you have read the accommodations guidelines for all populations you will be testing, especially those students with IEP and 504 Plans
- Please also be sure to read your administrator's handbook prior to administering the assessment.
- Please be aware of all PSSA Do's

and Don'ts of PSSA Test Security. You will receive this list in your buildings.

- Please remember that proctoring is the single most important factor in test administration. Good proctoring will yield higher results.
- Please be reminded that assessments are to be secured at all times and at no time is a student allowed to walk out of their test with a booklet.

2009-2010 PSSA Testing Schedule:

- Grade 12 Re-test: Oct 26-Nov 6, 2009
- Reading and Math: Apr 12-16, 2010
- Writing: Apr 19-23, 2010
- Science: April 26-30, 2010

MAGIC WORDS

The following are vocabulary words the students receive credit for using appropriately on the PSSA:

To Find

To Get

To Figure Out

To see

Because

Since

Therefore

To Show

To Determine

4Sight Assessment

In today's high-stakes testing environment, you can't afford to wait to see how your students perform on your state assessments. You need to estimate how students are likely to perform throughout the year. That's why the Success for All Foundation created 4Sight, a benchmark assessment tool that enables you to predict your students' reading - and in some states, math - achievement multiple times throughout the year. These predictions allow you time to take action in the areas in which students need help. No prediction is perfect, but 4Sight provides a useful guide to help teachers focus instruction.

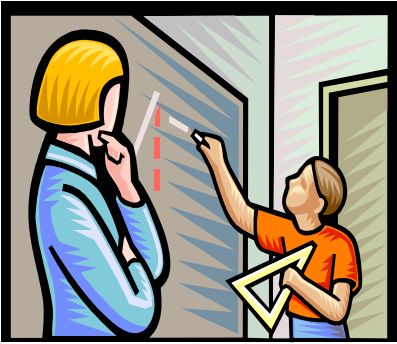
The Pennsylvania 4Sight Benchmark Assessments are valid, reliable and aligned to the PSSA and provide an

estimate of student performance on the PSSA, as well as PA Academic Standards and Assessment Anchor level data to guide classroom instruction and professional development efforts. Most recent editions of 4Sight Benchmark Assessments are updated to reflect the most recent changes in Assessment Anchors.

2009-2010 4Sight Testing Schedule:

- Benchmark: Sept 9-11, 2009
- Quarter One: Nov 9-11, 2009
- Quarter Two: Jan 4-8, 2010
- Quarter Four: May 10-14, 2010

We will continue to mirror the PSSA with testing in grades 3-8, and 11.



*Remember:
Assessment Drives
Instruction!*

Twelve Words That Can Confuse Students on Standardized Tests

- Trace
- Analyze
- Infer
- Evaluate
- Formulate
- Describe
- Support
- Explain
- Summarize
- Compare
- Contrast
- Predict

Suggestion:

Convert these words into short, friendly phrases your students can identify with and remember

DIBELS K-6 Assessment

The DIBELS Data System is a web-based database that schools and districts use to enter student performance results and create reports based on scores from DIBELS (*Dynamic Indicators of Basic Early Literacy Skills*).

The Data System tracks and measures progress at the student, class, school, and district-level. Reports can be created immediately after scores are entered, providing immediate feedback and allowing for timely decision making. The DIBELS measures were specifically designed to assess the five early literacy components: Phonological Awareness, Alphabetic Principle, Vocabulary, Comprehension, and Fluency with Connected Text.

The DIBELS measures link together to form an assessment system of early literacy development that allows educators to readily and reliably determine student progress. We can utilize the DIBELS Data System reports to make instructional decisions about children's reading performance.

2009-2010 DIBELS Testing Schedule

- Fall: Sept 14-18, 2009
- Winter: Jan 11-15, 2010
- Spring: May 24-28, 2010

"Research shows that students entering grade three below grade level in Reading will always lag behind"

Performance Tracker

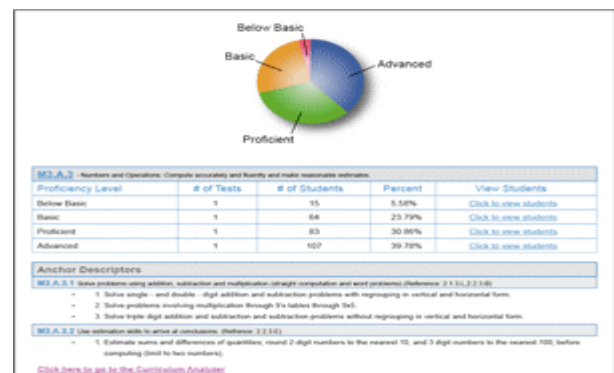
Analyze Student Performance with a Click

Performance Tracker is the premier assessment management solution designed to track and assess student achievement. Educators can easily sort and analyze data with unlimited potential. Data is viewable from the student up, district down or anywhere in between. The choice is yours.

Features:

- Anytime, anywhere access to students' strengths and weaknesses
- Effortlessly sort data with live charts, graphs, and reports – Simply click to

- drill down to the next level
- Seamless integration with Assessment Builder for tracking local benchmarks
- Align data to state standards with ease



For assistance with analyzing classroom, grade level, or school-wide data please contact
Andréa Coleman-Hill at:
 Ext. 1277
 or via email at:
acoleman@gmsd.k12.pa.us